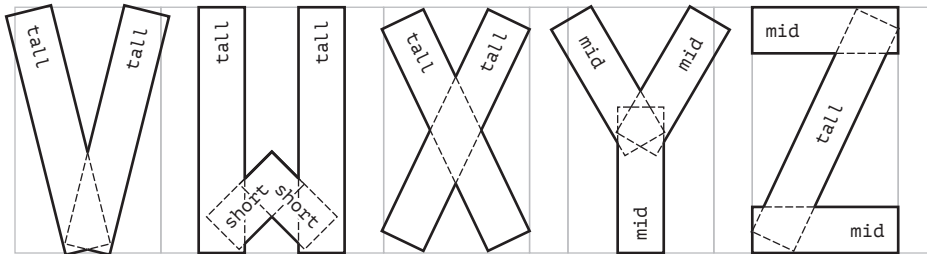
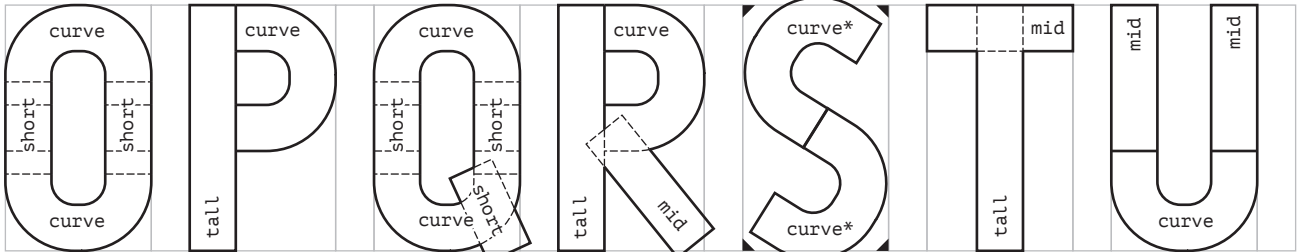
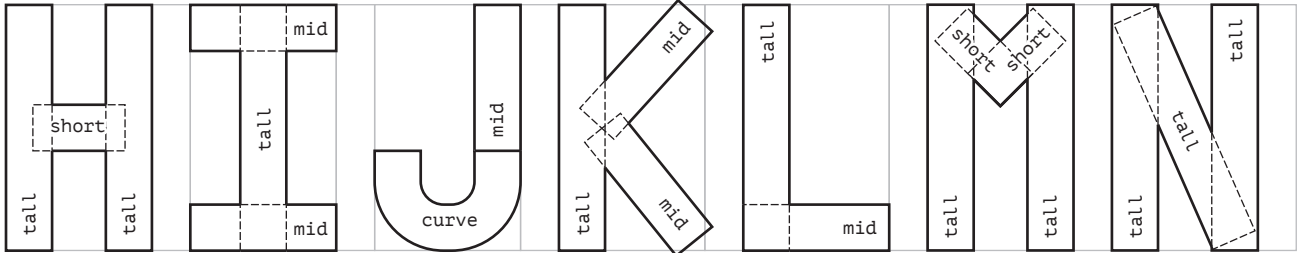
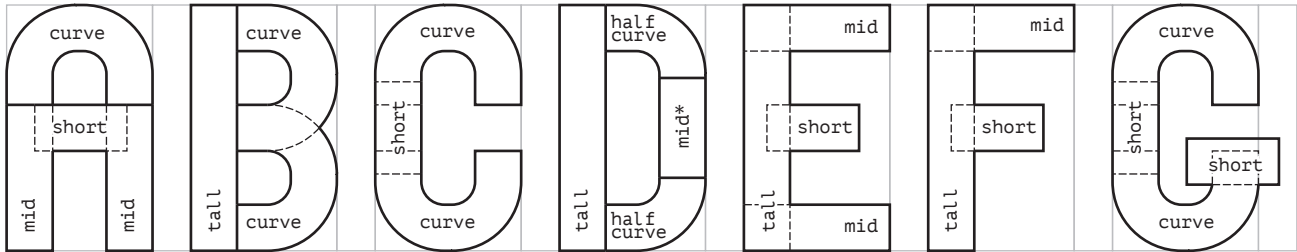


simple letter stencil

letter & number making guide



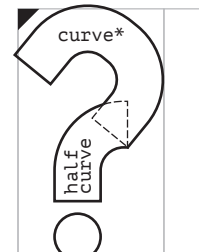
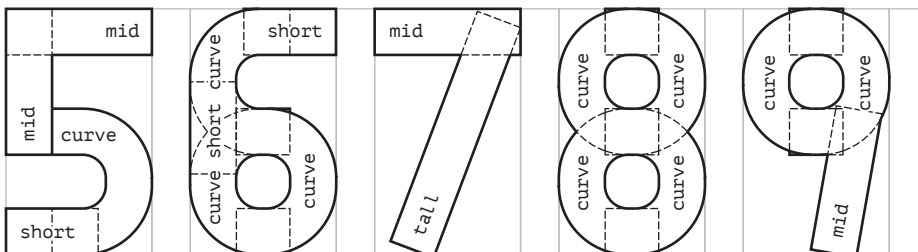
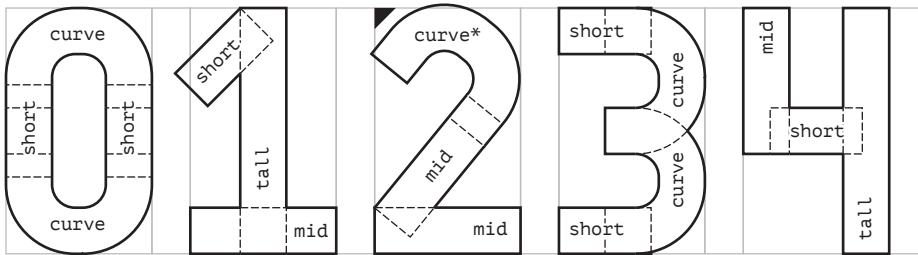
* notes

D D uses 2 half curves and a shortened mid.

S S curves are aligned using the triangle S guides. align both S guides to the top for the top curve. align both S guides to the bottom for the bottom curve.

2 2 curve: align the 2 guide to the top left corner.

? ? top curve: align the 2 guide to the top left corner. bottom dot has no guide. draw with a pencil first.



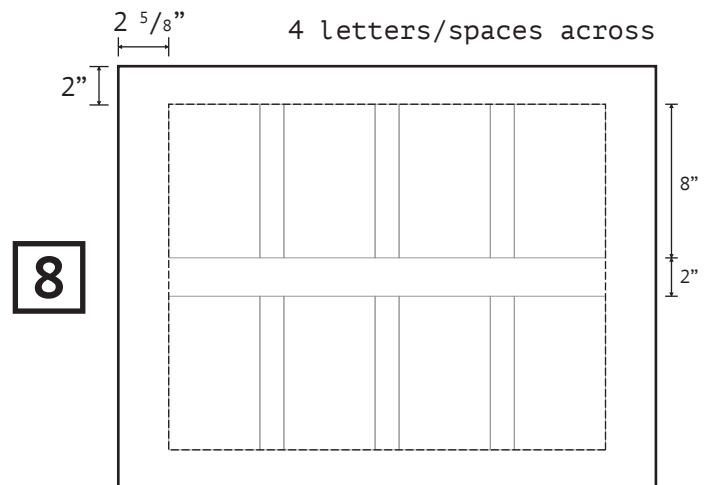
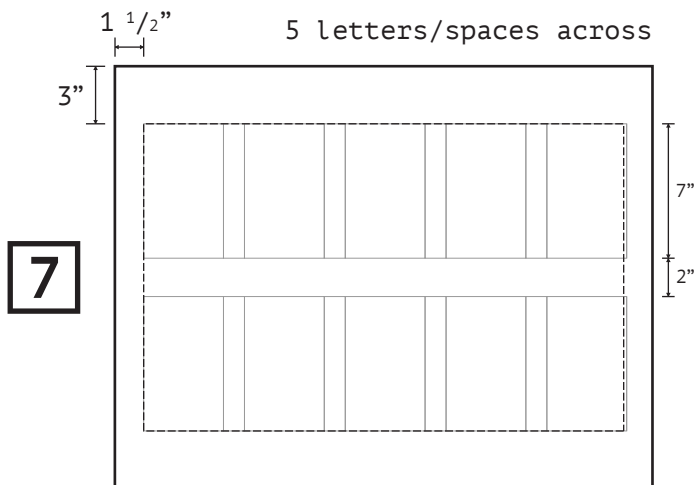
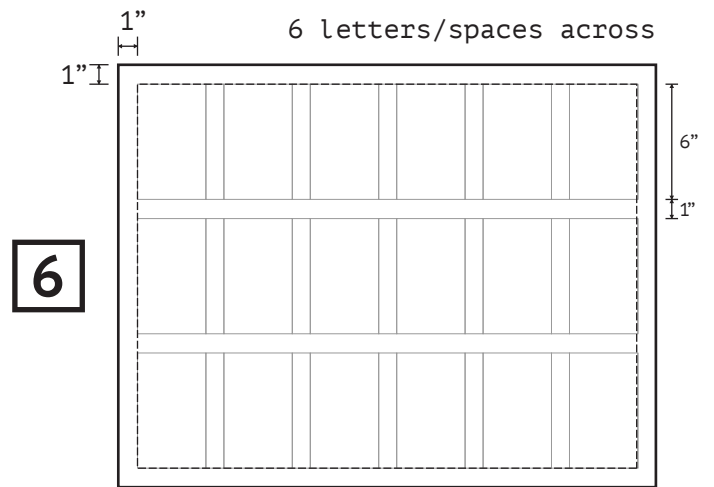
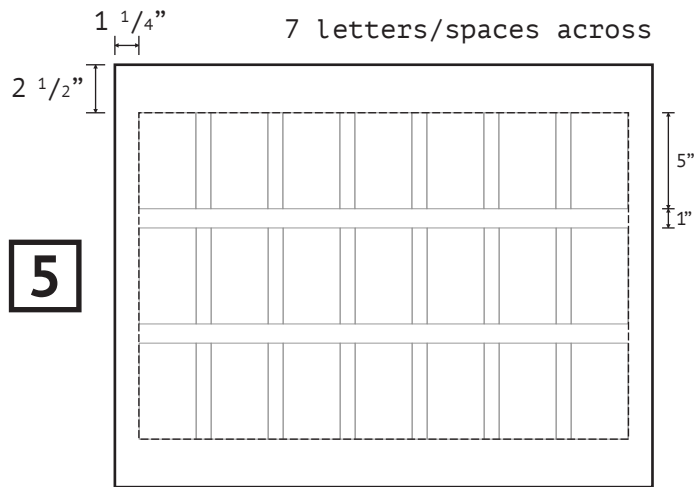
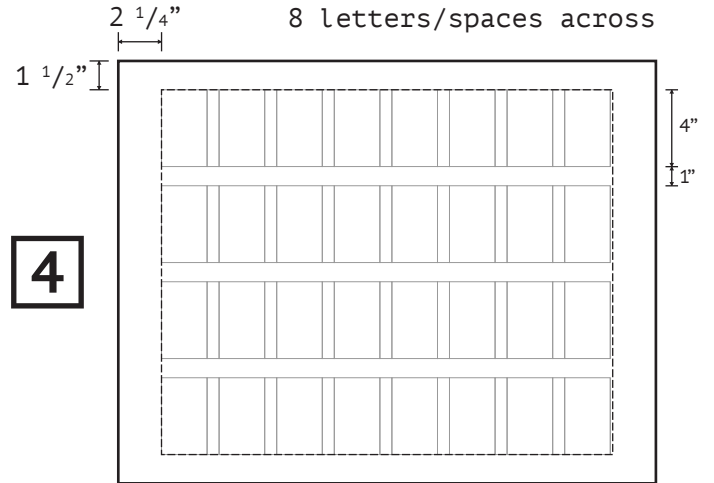
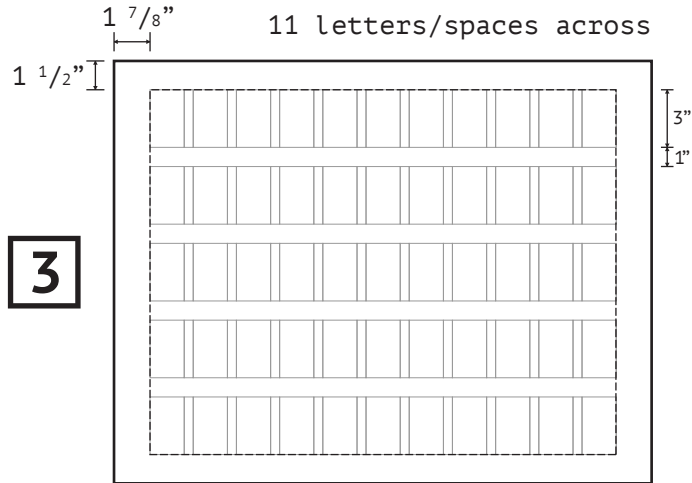
simple letter stencil

poster board planning guide

poster board 28" wide - 22" tall

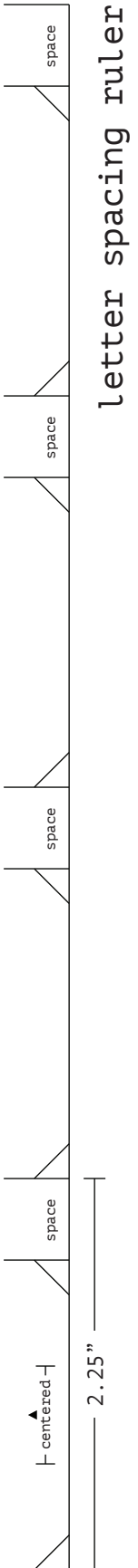
begin by drawing a grid on your poster with pencil.

use the letter spacing ruler to assist.



3 simple letter stencil

3" tall - 2.25" wide



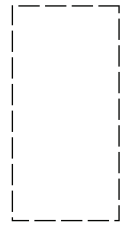
tall



mid



short

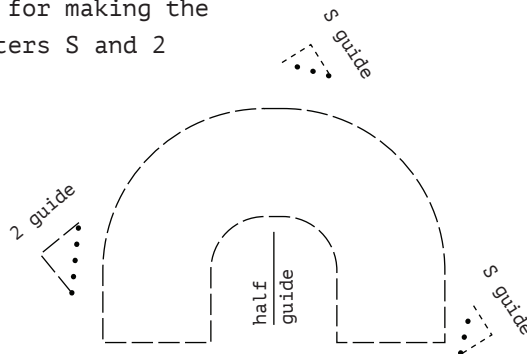


instructions

- cut dashed line
- fold dotted line

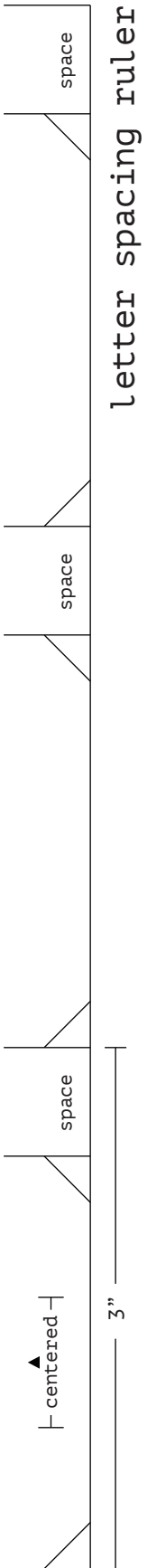
curve

the triangles are guides for making the characters S and 2

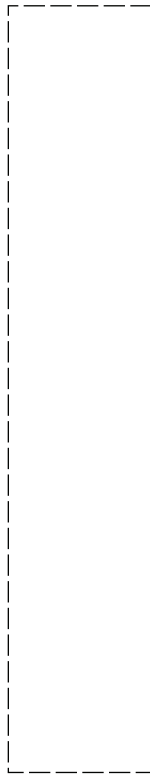


4 simple letter stencil

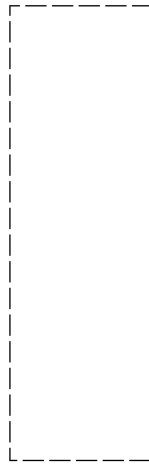
4" tall - 3" wide



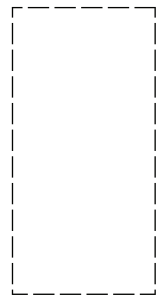
tall



mid



short

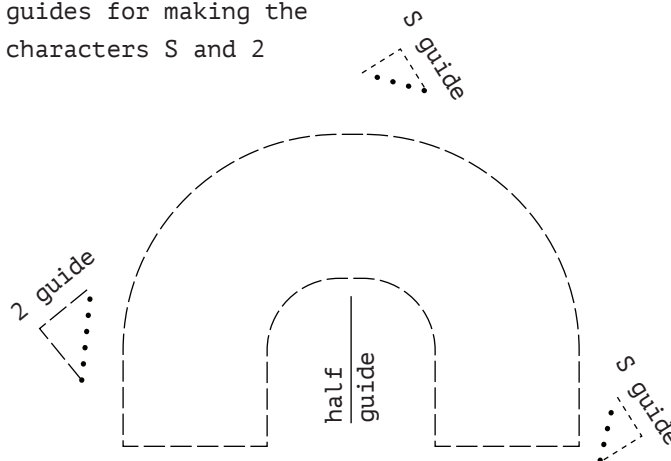


instructions

- cut dashed line
- fold dotted line

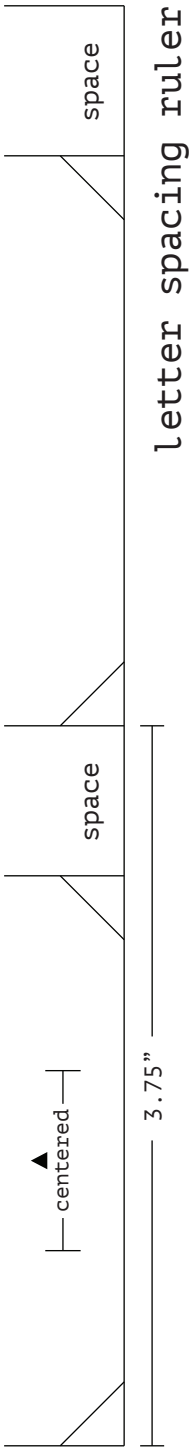
curve

the triangles are guides for making the characters S and 2

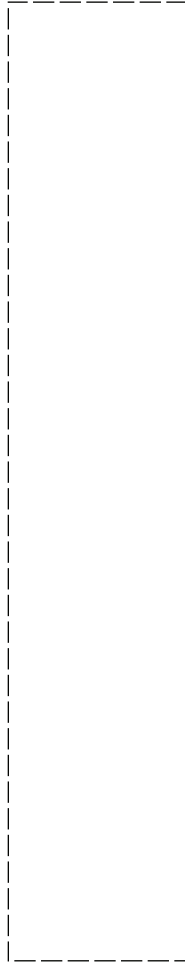


5 simple letter stencil

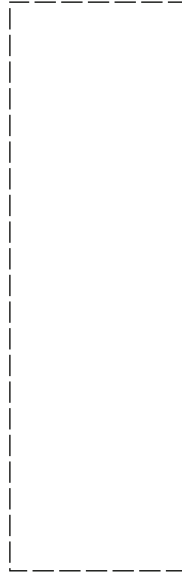
5" tall - 3.75" wide



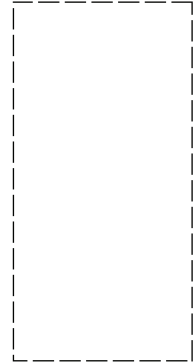
tall



mid



short



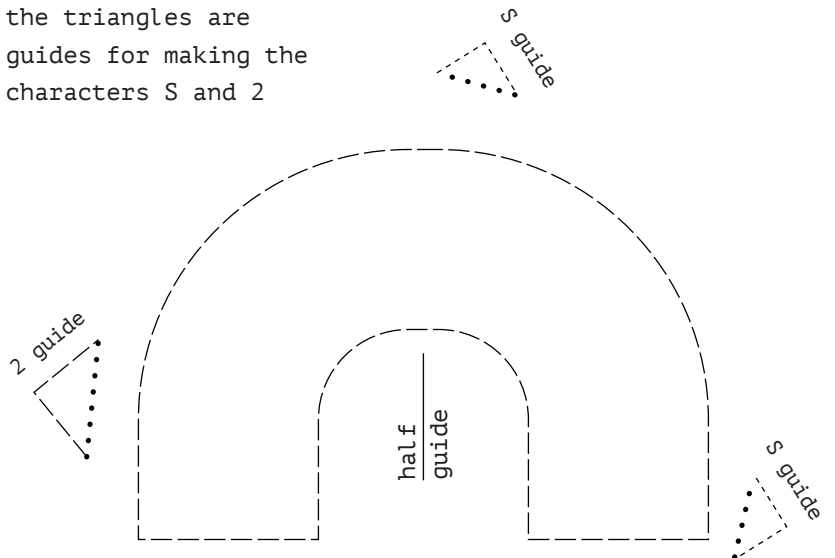
instructions

----- cut dashed line

..... fold dotted line

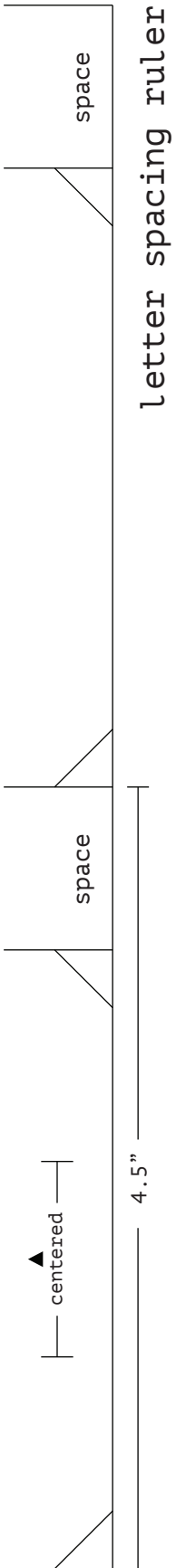
curve

the triangles are guides for making the characters S and 2

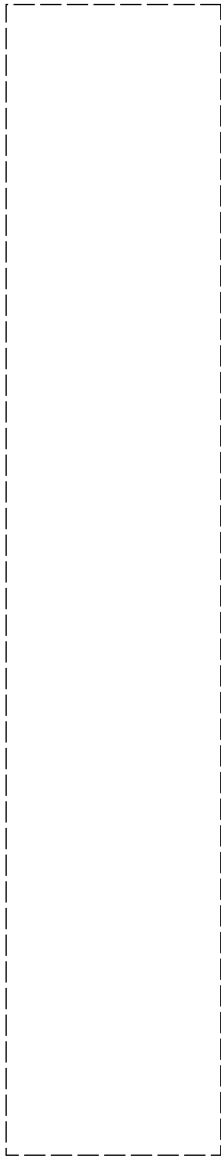


6 simple letter stencil

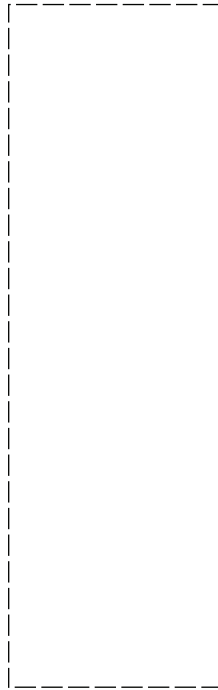
6" tall - 4.5" wide



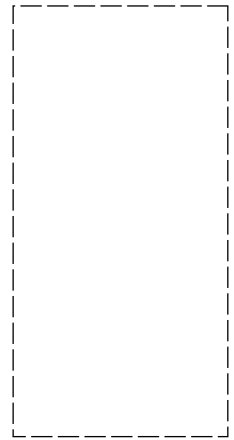
tall



mid



short

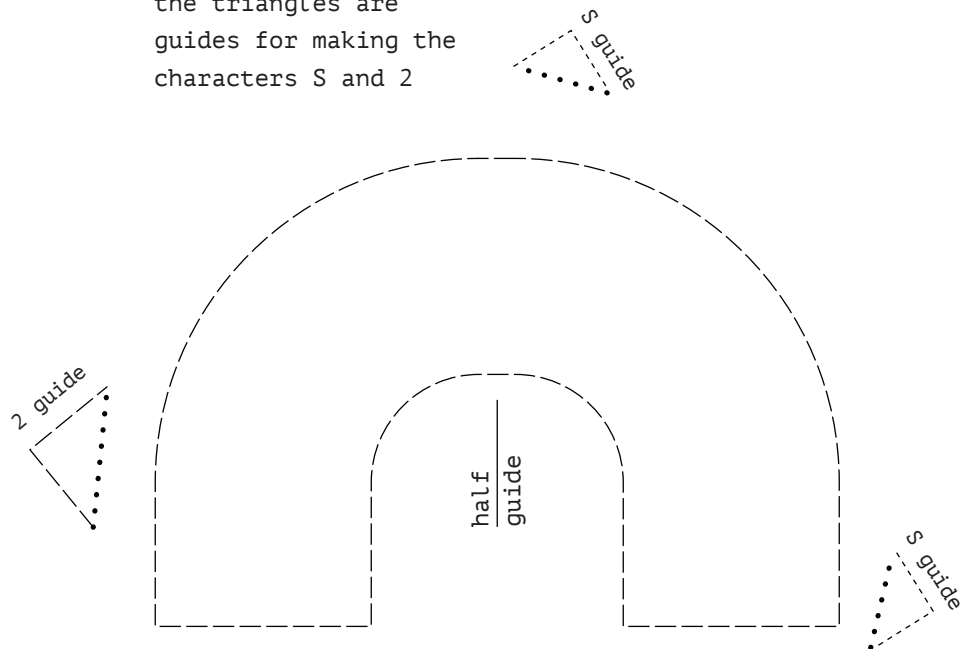


instructions

- cut dashed line
- fold dotted line

curve

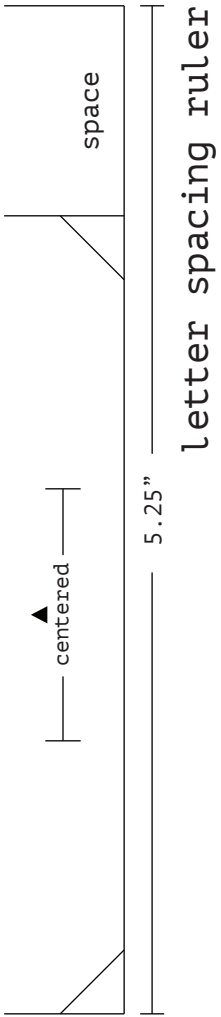
the triangles are guides for making the characters S and 2



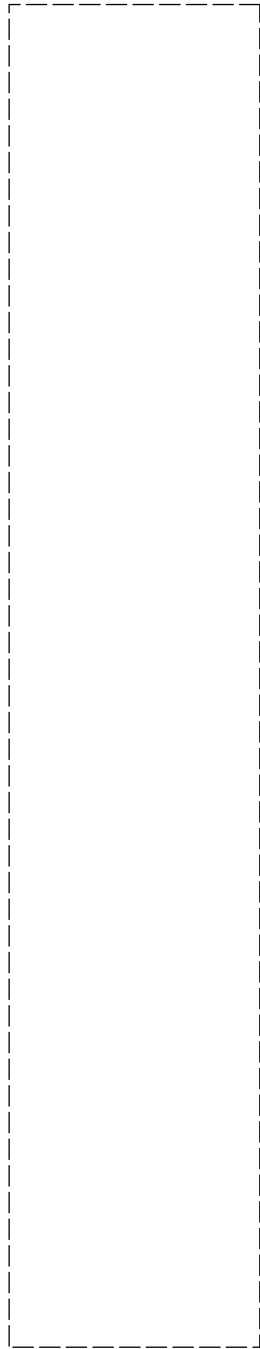
7

simple letter stencil

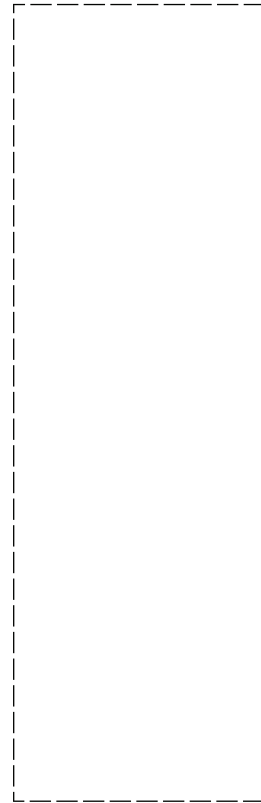
7" tall - 5.25" wide



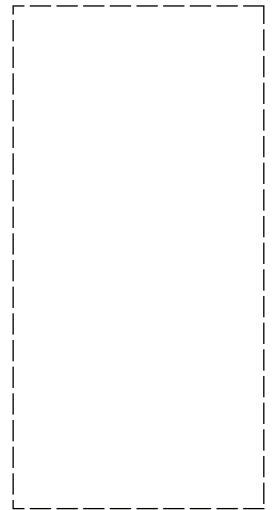
tall



mid



short

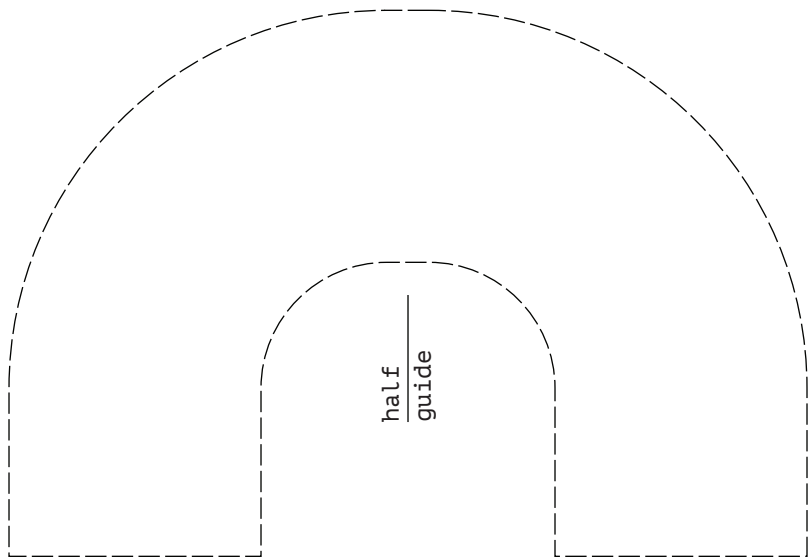
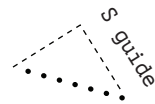
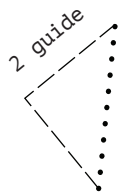


instructions

- cut dashed line
- fold dotted line

curve

the triangles are guides for making the characters S and 2

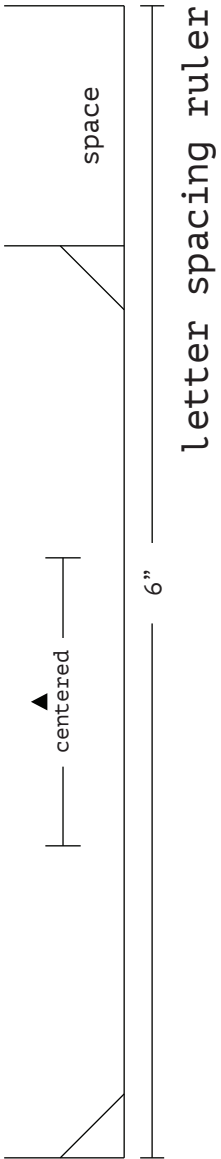


8

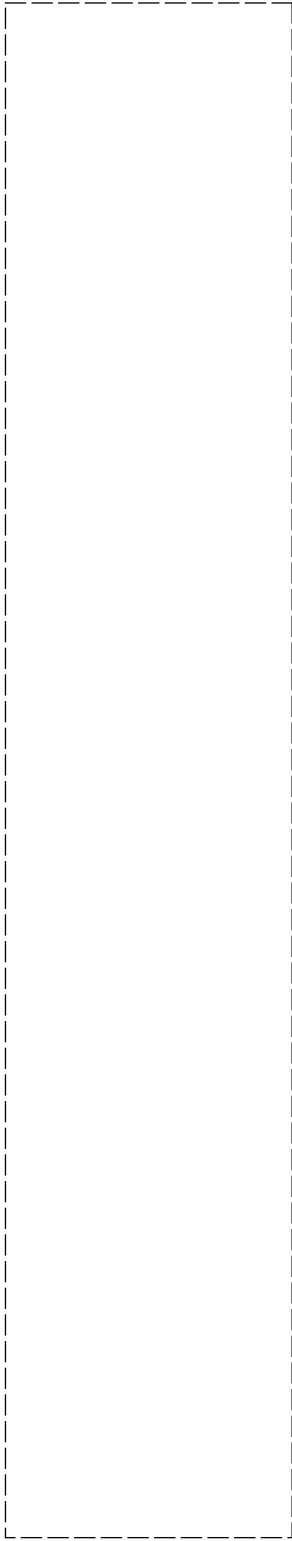
a

simple letter stencil

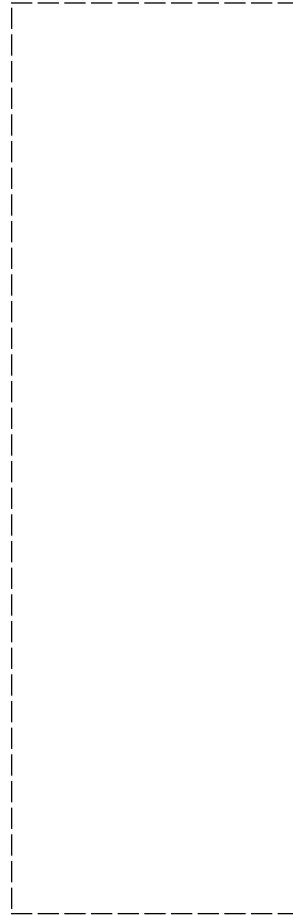
8" tall - 6" wide



tall



mid

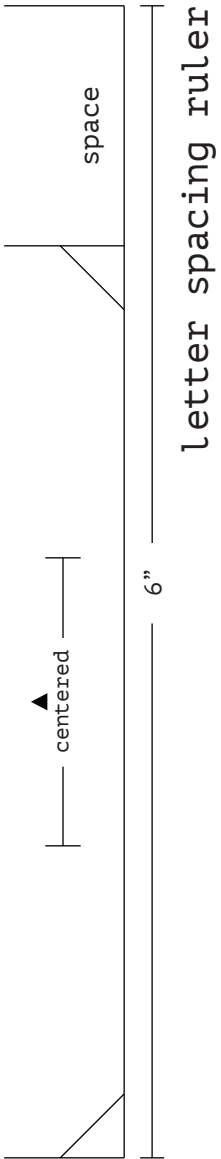


instructions

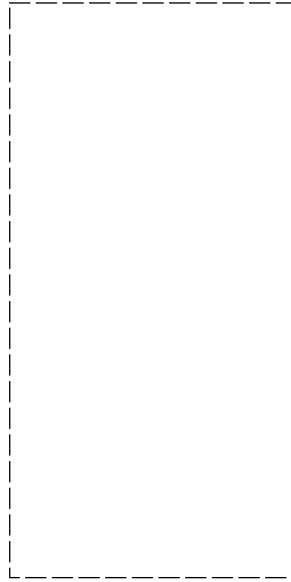
----- cut dashed line

8 b simple letter stencil

8" tall - 6" wide



short



instructions

- cut dashed line
- fold dotted line

curve

the triangles are guides for making the characters S and 2

